



A Closer Look at Westview Meadows

RESIDENTIAL CARE



SENIOR LIVING IN
THE HEART OF VERMONT





Discover

*a higher level of care and support
in a vibrant, uplifting setting*

Westview Meadows recognizes that some residents may require an increased level of service and support. To provide that, we offer 16 Residential Care apartments complete with dining room, country kitchen, and activity areas.

Staff are available around the clock for members of our Residential Care community, whether it be daily assistance with dressing and personal care or coordinating medications. While help is always close at hand, we also have great respect for our residents' desire for privacy and independence.

Members of our Residential Care community enjoy participating in frequent organized activities, both cultural and recreational. We work with our residents to maximize their good health, so we offer regular wellness programs as well as gentle fitness classes.

Residential Care residents are served three nutritious, tasty meals daily, and are provided with weekly laundry service.

Residential Care at Westview Meadows

Included in the monthly fee:

24-hour staffing

Medication management

3 nutritious meals per day

Transportation to medical or other appointments

Cleaning & laundry service

Personal care assistance

Emergency response system

Professional nursing assessments & care planning

Health & wellness programs

Social, recreational and cultural activity programs

In addition to these services, Westview Meadows also offers:

Automatic sprinkler system throughout building

With alarm system linked to local fire station for immediate response

Exterior door security system

Outings and day trips

Hairdressing salon

Spa / whirlpool bath

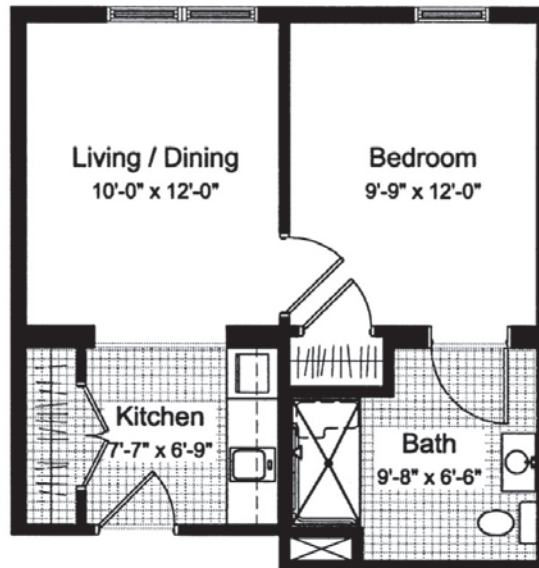
Floor Plans

Apartments

Standard Residential Care Apartment

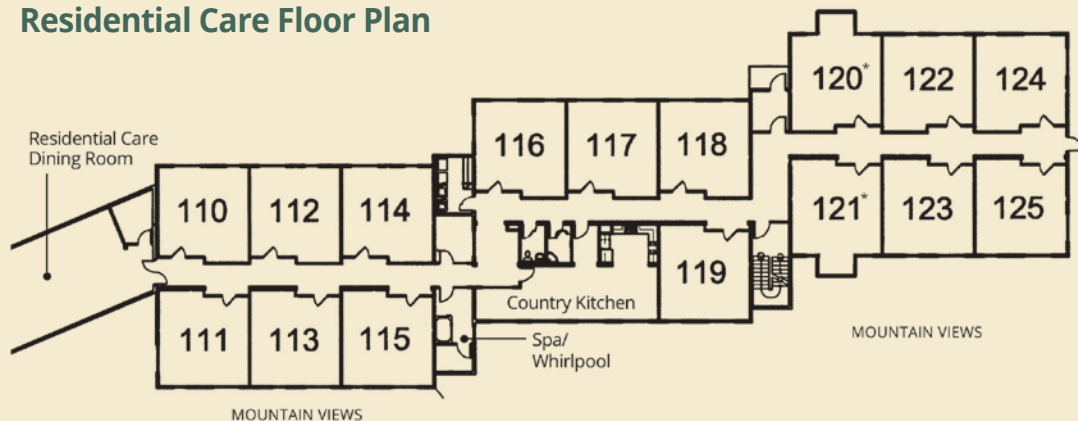
446 sq. ft.

1 Bedroom, 1 Bath



- All Residential Care apartments are wheelchair accessible
- Each room has basic cable television service, individual thermostat control, and a telephone jack
- Cleaning and basic laundry services provided

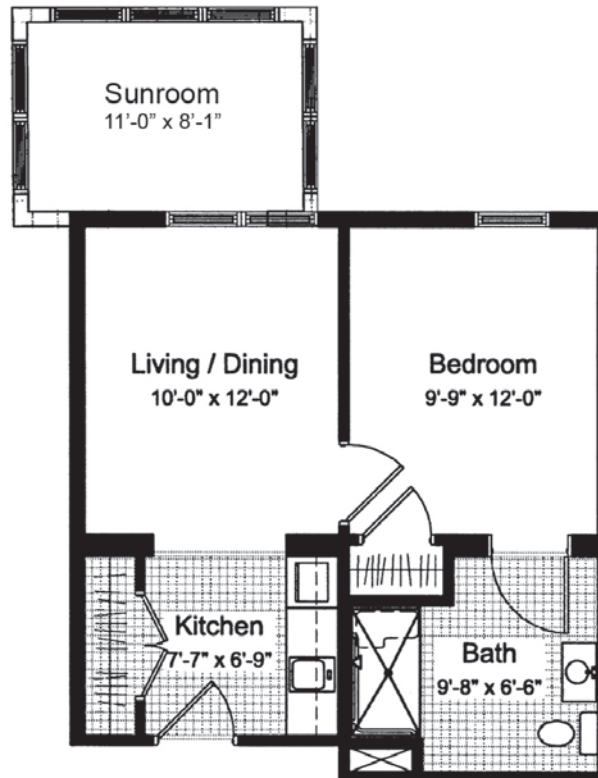
Residential Care Floor Plan



Deluxe (*units 120 & 121 only**)
Residential Care Apartment

542 sq. ft.

1 Bedroom, 1 Bath, plus Sunroom



The Residential Care Area

Our Residential Care residents enjoy an increased level of service and support in their own wing of Westview Meadows, which features its own dining room, country kitchen, and activity areas, plus 14 standard apartments and 2 deluxe apartments.

Members of the Residential Care community have access to all activities and amenities at Westview while enjoying the privacy and safety of their own wing.

Frequently Asked Questions

How many people live at Westview Meadows?

We have 36 Independent Living and 16 Residential Care apartments.

Is there an age requirement?

We welcome individuals and couples age 62 and older.

Is there a waiting list?

Check our website for current availability. You can join our Priority List program to be considered for a particular style of apartment or to plan several years in advance.

May I bring my own furniture?

Yes, your apartment is yours to furnish and decorate as you wish.

May I have guests for meals and overnight visits?

Your guests are always welcome! To have friends or family join you for a meal, please let our dining room staff know 24 hours in advance.

May I bring my pet?

Cats and small, well-behaved dogs are welcome at Westview Meadows, as long as residents are appropriately able to care for them. Please ask for a copy of our pet policy.

Is transportation available?

Transportation operates M-F. Transportation for more personal use, such as appointments, requires advance scheduling.

May I bring my car?

Yes. We have 18 carports and there is a monthly fee.

What if my health changes?

We understand that health changes are part of aging, so we have two separate levels of care. We will help you transition to the most appropriate level of care at Westview Meadows. Should we not be able to meet your needs, high-quality local health care providers will help you coordinate those services.

Does the monthly fee increase yearly and if so, is it announced ahead of time?

On average we increase the monthly fee between 1-2% a year. We give residents a 30-day notice about this price increase.

Is cable TV and WiFi available?

Yes, the basic cable package is included in your monthly fee. If you would like additional packages, you may contact the cable company.



Community Fee

The community fee is a one-time, non-refundable payment. This fee covers the administrative cost of moving your loved one into the community. A portion also goes into refurbishing the unit and funding for future capital projects.

Monthly Fees

Residential Care residents pay a monthly fee that covers a wide range of amenities. These include 24-hour staffing, medication management, three nutritious meals per day, transportation to medical or other appointments, cleaning and laundry service, personal care assistance, an emergency response system, professional nursing assessments and care planning, health and wellness programs, and regular programming that includes social, recreational and cultural activities.

How to Become a Resident at Westview

- Contact Administration at **(802) 223-1068** to schedule an appointment and tour.
- If we have a waiting list, you may secure your place on the list by completing our Priority Waiting List Agreement and submitting a deposit.
- Fill out our Application for Residency, which includes financial and medical information, and submit it to us.
- Review our Residency Agreement & Resident Handbook and let us know if you have any questions or unique circumstances we should be aware of.
- Set a date and time for move-in. Our staff will be on hand to help coordinate move-in.
- A one-time Community Fee and first month's rent will be due on the day of your move-in.

Cost Comparison Worksheet

Monthly Budget Item	Your Current Monthly Cost	Your Cost at Westview Meadows
Housing		
Rent / Mortgage Payment (Monthly fee)	\$	\$
Property Taxes	\$	Included
Property Liability Insurance	\$	Included
Renter's Insurance	\$	\$
Utilities		
Heat	\$	Included
Electricity / Gas	\$	Included
Water / Sewer	\$	Included
WiFi	\$	Included
TV (basic cable)	\$	Included
Food		
Meals	\$	Included
Home Maintenance		
General Maintenance and Servicing	\$	Included
Repairs / Replacement	\$	Included
Trash / Yard Care / Snow Removal	\$	Included
Housecleaning / Laundry (weekly)	\$	Included
Transportation		
Gas, maintenance, repairs, insurance, etc	\$	Included
Health / Social Care Service		
24-hour Staffing / Emergency Response	\$	Included
Regular Health Screening	\$	Included
Medication Management Assistance	\$	Included
Recreation / Social Activities	\$	Included
Fitness Classes	\$	Included
Personal Care	\$	Included
TOTAL	\$	\$

2017 Edition



TEL: (802) 223-1068
FAX: (802) 223-3233
 171 Westview Meadows Road
 Montpelier, Vermont 05602
www.westviewmeadows.com